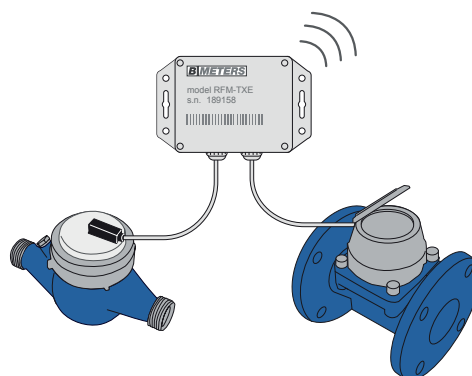


mod.

RFM-TXE

Wireless M-BUS module for pulse output meters



Description

The RFM-TXE module transmits via radio the lecture data of 1 or 2 meters equipped with pulse output device. This allows to transmit via wireless M-BUS the data acquired by the meters that don't allow the installation of the integrated radio module solution. The module can be connected to any meter equipped with pulse output, of any brand, size and version. The configuration and the reading of the radio signal should be performed with the RFM-RX2 receiver linked to a PC.

Technical features

Transmission frequency	W-Mbus EN13757-4 @868 MHz ≤ 10 mW
Signal coverage	300 m**
Supported Medium	water, heat/cool, electric energy, gas
Power Supply	Lithium battery 3.6V
Battery life	Maximum 10 years*
Size (HxLxP) and weight	30x67x67 (AxLxP in mm) 43 g
Configuration	Wireless using RFM-RX2 and dedicated software
Working Temperature	from +1°C to +55°C
Protection class	IP65
Transmitted Data	Volume (consumption), historical values, battery status, alarms.
Pulse input	N°2 inputs. Connectable to pulse emitter systems (reed and Open Collector)

* Battery life depends on the number of associated devices and the environmental conditions

** Under ideal signal propagation conditions