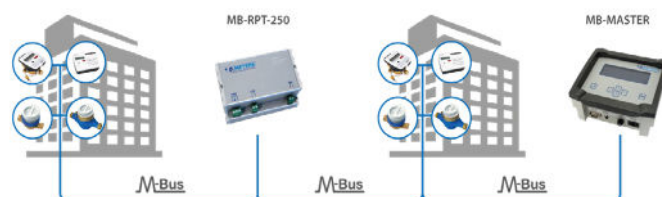


mod.

MB-RPT-250

M-BUS wired Signal repeater



Description

The MB-RPT-250 is a microcontroller-based, bidirectional, M-BUS to M-BUS repeater. It can supply power to maximum 250 m-bus slave devices. The MB-RPT-250 is used in domestic and industrial applications, where extension of the S-BUS network is needed. It is provided with output short circuit protection on the M-BUS side. It is mounted on standard M36 DIN rail.

Technical features

Max. number of M-BUS slave devices	250
Nominal output voltage (mark)	35,5 VDC \pm 1 V
Power supply voltage	165-235 VAC (210-270 VDC)
Ambient temperature, operating	-20 \div +50°C
Dimensions (H/W/D)	105/107/74 mm
IP protection class	IP20
RS-485 RTU Modbus interface baud rate	300, 1.2K, 2.4K, 4.8K, 9.6K, 19.2K, 38.4K bps
TCP Modbus DHCP	yes, can be turned on or off
M-BUS cable length, max.	600 m
Distance between MB-RPT-250 and farthest M-BUS slave	300 m