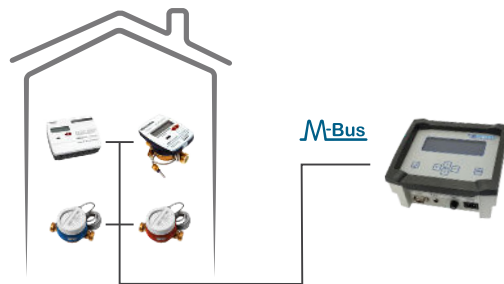


mod.

mb- master

M-BUS concentrator



Description

Functionalities

The MB-MASTER allows communication with all MBUS equipment and is specially designed to be used in a consumption reading network composed by BMETERS modules dedicated to water and heat meters. Available on sizes supporting network up to 60 or 250 MBUS slaves and cable length up to 1200m. Equipped with an high contrast display enables users to view easily consumptions and historical indication up to 1 years (12 monthly values).

Operation

The MB-MASTER is very easy to install and operate, setting up of the network devices and reading could be done easily from the Master site. Addressing of the metering devices installed on the field could be carried out from the Master without moving to modules installation point and without needs to use any other devices. Supplied with a user-friendly software allows singleclick network reading operation with option to get historical consumptions up to 12 previous monthly values, exporting of consumption data to file with standard formats suitable for accounting purposes.

Ready to communicate

Equipped with RS232\USB interface is ready to be connected to any PC, or to Ethernet and GPRS network (expansion modules required).

Technical features

Temperature Operating range	from -20°C up to +55°C
Power Supply	55-250 VAC/ 80-350 VDC
Protection degree	IP54
Protocol supported	MBUS Standard EN 13757-3
Network cable max length	Up to 1200m
Dimensioni (A/L/P) / Size	180/200/95 mm
Available data	Actual consumption, up to 12 monthly historical values