

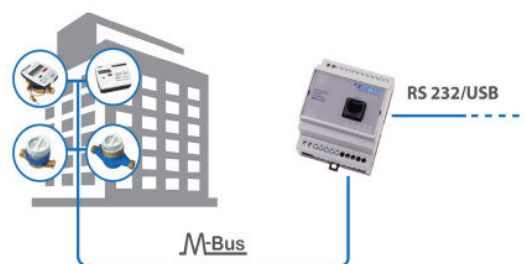
mod.

MB-LV32

M-BUS level converter



RS 232/USB



Description

MB-LV32 is microcontroller-based bidirectional full-duplex M-bus to RS-232C converter. It can supply power to maximum of 32 m-bus slave devices. MB-LV32 is used in building and industrial tax meters and/ or sensors remote reading networks. It has output short circuit protection. It is mounted on standard M35 DIN rail.

Technical features

Max. number of M-BUS slave devices	32
Max. output current	70 mA
Output current protection level	90 mA
Nominal output voltage (mark)	35.5 VDC \pm 1 V
Zero output voltage '0' (space)	22-25 VDC
Power supply voltage	150-250 VAC (200-350 VDC)
Max. power consumption	< 4 W (@ 32 m-bus slaves connected)
Ambient temperature, operating	-20 \div +50°C
Ambient temperature, storage	-50 \div +90°C
Air humidity	40 \div 90 %
Dimensions (H/W/D)	86/70/57 mm
IP protection class	IP30
Max. transmissible signal baud rate	4800 bps
Max. distance between master and slave in the network	1200 m
Display	5 LEDs (prot, RX, bus/TX, collision, overload)
Weight	200 g