

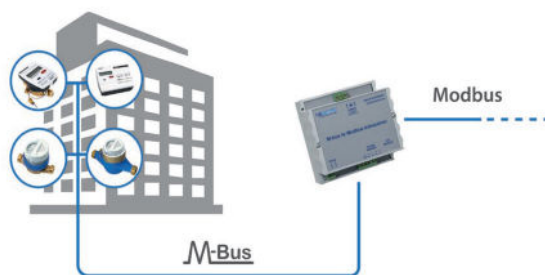
mod.

# MB-CR-64

Concentrator with conversion signal from M-BUS to Modbus MODBUS

M-Bus

Modbus



## Description

MB-CR-64 is microcontroller-based bidirectional M-BUS Master converting M-Bus signal to Modbus RS-485 RTU and or Modbus TCP. It can supply power to maximum of 64 m-bus slave devices. MB-CR-64 is used as a bridge in building and industrial networks where it is needed to read m-bus devices (tax meters and/or sensors) in Modbus based SCADA systems. It has output short circuit protection on m-bus side. It is mounted on standard M36 DIN rail.

## Technical features

Max. number of M-BUS slave devices	64
Nominal output voltage (mark)	35.5 VDC $\pm$ 1 V
Power supply voltage	170-250 VAC (200-350 VDC)
Ambient temperature, operating	-20 $\div$ +50°C
Dimensions (H/W/D)	105/107/74 mm
IP protection class	IP20
RS-485 RTU Modbus interface baud rate	300, 1.2K, 2.4K, 4.8K, 9.6K, 19.2K, 38.4K bps
TCP Modbus DHCP	yes, can be turned on or off
M-BUS cable length, max.	600 m
Distance between MMCR and farthest M-BUS slave	300 m