

CMa30

USB M-Bus master



CMa30 is a USB M-Bus master especially designed for mobile service. Together with a laptop, the CMa30 is the perfect choice for installation, troubleshooting and reading of individual M-Bus slaves and small M-Bus systems.

Easy to use

CMa30 is used together with a laptop for installation of individual M-Bus slaves and reading of small M-Bus systems. The product requires no external power supply and is connected to the computer via USB. The product is easy to install and is opto isolated for secure and error-free operation. CMa30 is equipped with clear LED-indicators which facilitate troubleshooting of M-Bus systems.

Flexible

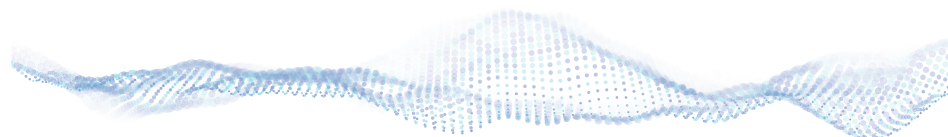
CMa30 can be used to read all types of M-Bus meters and is compatible with the most common M-Bus software on the market. The product can operate up to 30 M-Bus slaves, which allows reading of existing M-Bus systems. The product's compact, light and user-friendly design makes it ideal for service purposes.

Technical data

Mechanics	
Protection class	IP41
Dimensions	98x57x26 mm
Weight	95 g
Connection M-Bus	Pluggable screw terminal 0.25- 2.5 mm ²
Mounting	Desktop
Cable	USB type A-B 0.6 m

Electrical	
Power supply	USB type B 5 V 500 mA
Power consumption at 1T	160 mA

Environmental	
Operating temperature range	-20 °C to +55 °C
Storage temperature range	-40 °C to +85 °C
Pollution	Degree 2
Operating altitude	0-2000 m



M-Bus	
M-Bus standard	EN 13757
M-Bus baud rate	300, 2400 baud
Maximum connected M-Bus loads	30 (one load is 1.5 mA)
Maximum cable length	1000 m
Maximum load capacitance	1,5 uF
Nominal voltage	28 VDC
IR interface	No
Pass through	No
Compatibility	All standard M-Bus slaves

Approvals	
EMC	EN 61000-6-2, EN 61000-6-3

 technical@bmetersuk.com

 www.bmetersuk.com

 01157 722 506

