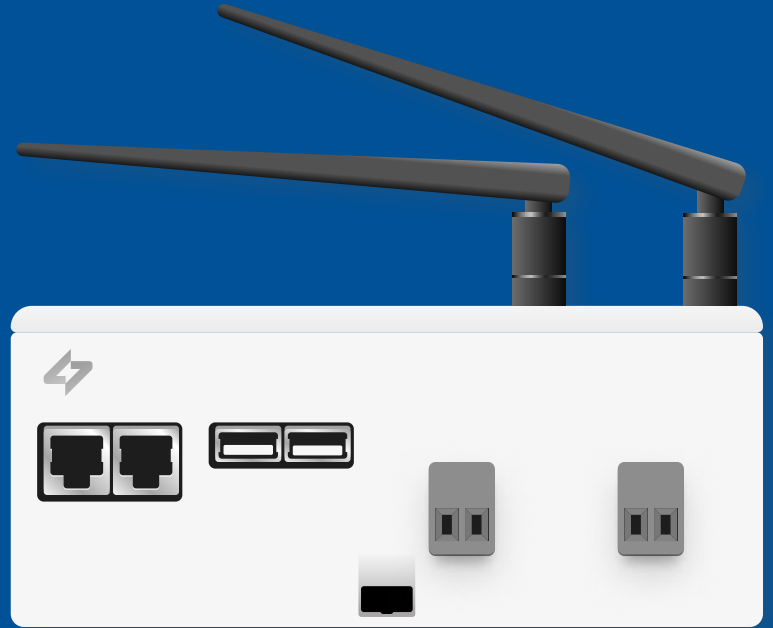


# The Wattsense<sup>®</sup> Bridge

Bridge the gap between buildings and IoT technology.

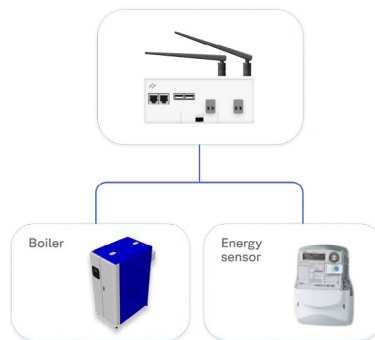


## More powerful than your regular gateway

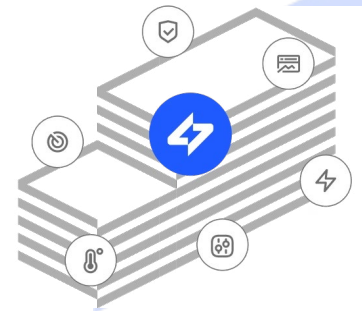
Collect data on-premises or through your private Cloud network.



Unify field communication protocols



Collect data from your equipment



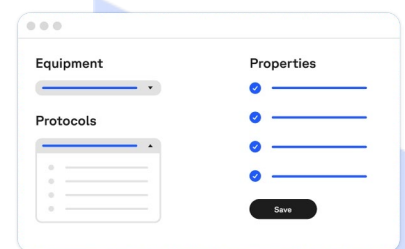
Manage your building locally



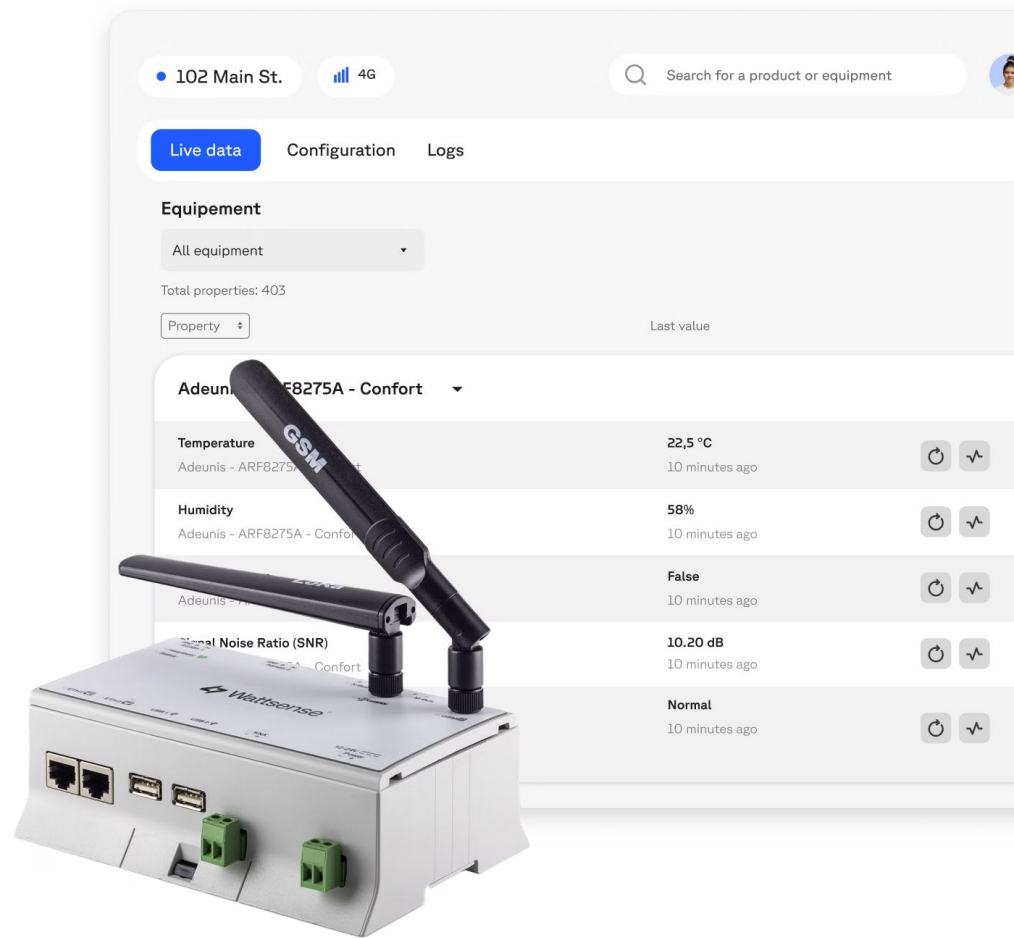
Connect any IoT sensors, meters, lights, HVAC, BMS...



Deploy apps and services



No coding skills required. Do it all via the Configuration Wizard.



# The Bridge user console

A web-based interface to connect your equipment in a few clicks with a growing device library of over 800 devices, retrofit your BMS, and stay in control of your building.

## Remote Configuration

Benefit from remotely configuring your equipment through the console while continuing to store your data points locally.

## Live Data

Act with real-time information. Make informed decisions, respond quickly to events, and improve operational efficiency.

## Logs

An essential tool for monitoring and managing your network. Keep track of all the events that take place on your Bridge.

# How does it work?

## Step 1

### Install the box

In less than a day install the box on the electrical cabinet of your building. Connect it to your networks and equipment.



## Step 2

### Configure your equipment remotely

With the Wattsense User Console set up your devices and network from anywhere, in no-time.



## Step 3

### Deploy your apps or connect to a BMS

Convert your data to BACnet IP, Modbus IP, MQTT. Retrofit your BMS by integrating legacy products with smart components.

# Support

The website contains useful information about Wattsense's product (Tutorials, Knowledge base, etc..) [support.wattsense.com/portal](https://support.wattsense.com/portal)

To alert the support team about any issues you are experiencing, please send an email to or create a ticket in our support platform. Please click here: [technical@bmetersuk.com](mailto:technical@bmetersuk.com)

<https://support.wattsense.com/portal/en/newticket>

The support team will get back to you as soon as possible.