



RFM-TX1

Wireless M-BUS transmission module for water meters

The RFM-TX1 is a radio module suitable for the water consumption data radio transmission applicable to the single jet GSD8-RFM water meters.

Easy to install and configure, it is designed with ultra-low power consumption components and special algorithms for energy savings.

In addition to the actual consumption and up to 12 months of historical values, it can detect several fraud attempts against the meters, maximum flow rate (Q4) exceeded and plumbing system downstream leakage.



TECHNICAL FEATURES

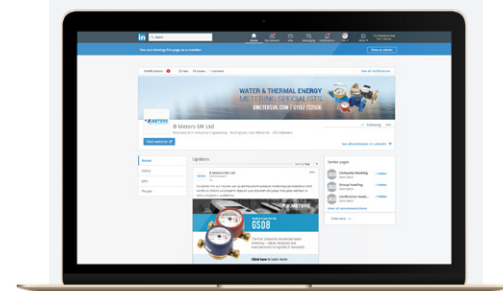
Transmission interface	W-Mbus EN13757-4 @868 MHz ≤ 10 mW
Signal coverage	300 meters*
Measure sensibility	1 litre
Power supply	Lithium battery 3.6V
Battery life	+10 years**
Size	30 x 67 x 67 mm
Weight	43g
Configuration	Wireless with RFM-RX2 and dedicated software
Working temperature	from +1°C to +55°C
Protection class	IP68
Transmitted data	Volume (consumption), total of backward flow, 12 monthly historical values, battery status, alarms
Alarms	Discharged battery, module removal, magnetic fraud attempt, maximum flow rate overlapping, backward flow, leakage detection

DESIGNING, PRODUCING AND DISTRIBUTING SOLUTIONS FOR OVER 25 YEARS

B METERS is an Italian company that has been designing, producing and distributing instruments and solutions for measuring the consumption of water and thermal energy used for heating and cooling, for over 25 years.

The yearly production currently exceeds 2M units, putting B METERS in a leading position both at national and European level.

The product range includes turbine (velocity) type single and multi-jet water meters with mechanical or magnetic transmission, Woltmann meters, irrigation meters, flow meters, thermal energy meters and heat cost allocators with direct reading, or complete with integrated modules for the remote transmission of the consumption data.



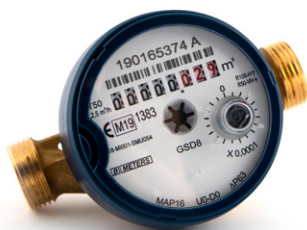
**FOLLOW BMETERS ON LINKEDIN,
KEEP UP-TO-DATE WITH ALL
LATEST NEWS AND PRODUCT
INFORMATION**



EN 1434

EN 834

THE BMETERS RANGE



WATER METERS



THERMAL ENERGY METERS



READING SYSTEMS



M-BUS SOLUTIONS