



IWM-LR4

IWM-LR4 is a LoRaWAN radio module applicable to the series of Woltmann water meters mod. WDE-K50

In addition to information on current consumption, it allows to detect different types of attempted fraud against the meter, prolonged operation at maximum flow rate (Q4) and the presence of a potential water leak downstream of the meter.

IWM-LR4 has been designed to allow wireless remote reading in different types of applications in commercial and industrial sectors.

The radio module thanks to the Long Range LoRa radio technology and the compliance to the LoRaWAN standard can be integrated into multi-service networks.



Radio interface	LoRaWAN @868 MHz ≤ 25 mW
Network joining methods	OTAA / ABP
Frequency of transmission	6 per day
Coverage	Up to 5 Km*
Compatible water meters	WDE-K50
Pulse output minimum value (K)	10 liters (up to DN125) or 100 liters (from DN150)
Configuration	NFC (with Android app)
Energy supply	Non-replaceable lithium battery, maximum lifetime 10 years**
Protection class	IP68***
Size (l x p x h)	100 x 100 x 57 mm
Working temperature	+1° / +55°C
Transmitted data	Volume (consumption), total of backward flow, alarms
Alarms	Discharged battery, module removal, magnetic fraud attempt, backward flow, leakage detection
Module programming requirements	Android device (smartphone, tablet, etc.) with an NFC interface and the NFC IWM Config APP freely downloadable from GOOGLE PLAY

* In optimal signal transmission conditions

** The battery life strongly depends on the working time window, set during the configuration process, and on the environmental conditions

*** IP68: maximum 24 hours of continuous submersion at 1 m depth

DESIGNING, PRODUCING AND DISTRIBUTING SOLUTIONS FOR OVER 25 YEARS

B METERS is an Italian company that has been designing, producing and distributing instruments and solutions for measuring the consumption of water and thermal energy used for heating and cooling, for over 25 years.

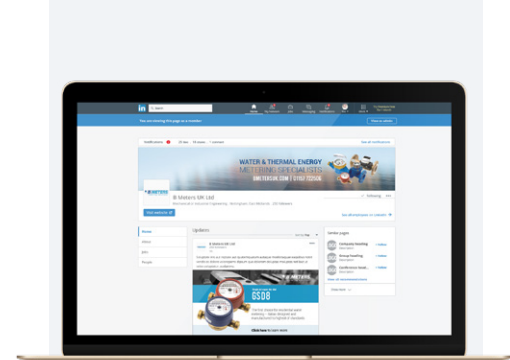
The yearly production currently exceeds 2M units, putting B METERS in a leading position both at national and European level.

The product range includes turbine (velocity) type single and multi-jet water meters with mechanical or magnetic transmission, Woltmann meters, irrigation meters, flow meters, thermal energy meters and heat cost allocators with direct reading, or complete with integrated modules for the remote transmission of the consumption data.



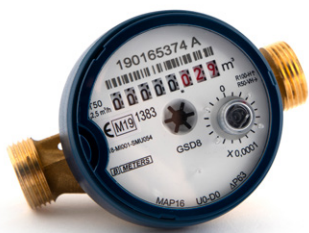
EN 1434

EN 834



**FOLLOW BMETERS ON LINKEDIN,
KEEP UP-TO-DATE WITH ALL
LATEST NEWS AND PRODUCT
INFORMATION**

THE BMETERS RANGE



WATER METERS



THERMAL ENERGY METERS



READING SYSTEMS



M-BUS SOLUTIONS