



WDE-K40

Horizontal Woltmann meter

The WDE-K40 has a sealed counter mechanism with magnetic transmission and direct reading across 6-numerical rolls.

Used for industry and irrigation, the WDE-K40 comes pre-equipped for pulse emitter device mounting.

Available in sizes from DN50 - 2" to DN200 - 8", for both cold water up to 50°C and hot water up to 90°C.

Approved according to MID 2004 /22/CE range R100-H/R100-V, ISO 4064 and OIML R49 compliant.



TECHNICAL FEATURES

| Size | mm (in) | 50 (2") | 65 (1/2") | 80 (3") | 100 (4") | 125 (5") | 150 (6") | 200 (8") |
|-----------------------------|-------------------|---------|-----------|---------|----------|----------|-----------|-----------|
| Overload flow rate Q4 | m ³ /h | 50 | 78.7 | 125 | 200 | 200 | 312.5 | 500 |
| Permanent flow rate Q3 | m ³ /h | 40 | 63 | 100 | 160 | 160 | 250 | 400 |
| Transitional flow rate Q2 | m ³ /h | 0.64 | 1.008 | 1.60 | 2.56 | 2.56 | 4.00 | 6.40 |
| Minimum flow rate Q1 | m ³ /h | 0.40 | 0.63 | 1.00 | 1.60 | 1.60 | 2.50 | 4.00 |
| Minimum reading | l | 0.5 | 0.5 | 0.5 | 0.5 | 0.5 | 5.0 | 5.0 |
| Maximum reading | m ³ | 999,999 | 999,999 | 999,999 | 999,999 | 999,999 | 9,999,999 | 9,999,999 |
| Max pressure loss at Q3 | bar | 0.16 | 0.25 | 0.16 | 0.25 | 0.16 | 0.16 | 0.16 |
| Max admissible pressure MAP | bar | 16 | 16 | 16 | 16 | 16 | 16 | 16 |

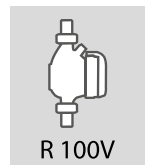
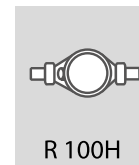
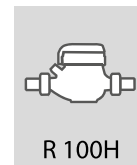
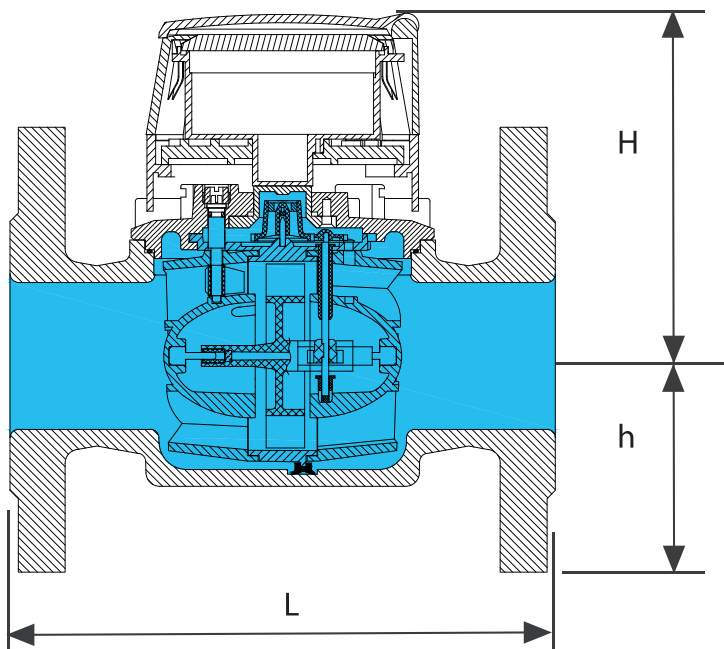
BASIC VERSIONS

- R 100-H/V
- Available for cold water 0.1°C – 50°C only
- Magnetic transmission
- Direct reading on 6 numeric rolls (7 numeric rolls on DN150 and DN200)
- Pre-equipped for pulse emitter device mounting
- With removable insert
- Dry dial
- With lid

UPON REQUEST

- Equipped with pulse emitter device

DIMENSIONS & WEIGHTS



| Size | mm (in) | 50 (2") | 65 (2" 1/2) | 80 (3") | 100 (4") | 125 (5") | 150 (6") | 200 (8") |
|--------|---------|---------|-------------|---------|----------|----------|----------|----------|
| L | mm | 200 | 200 | 225 | 250 | 250 | 300 | 350 |
| H | mm | 123 | 123 | 149 | 147 | 274 | 311 | 365 |
| h | mm | 78 | 87 | 95 | 106 | 117 | 134 | 165 |
| Weight | Kg | 7.95 | 10.10 | 14.28 | 16.50 | 20.30 | 34.00 | 45.00 |

DESIGNING, PRODUCING AND DISTRIBUTING SOLUTIONS FOR OVER 25 YEARS

B METERS is an Italian company that has been designing, producing and distributing instruments and solutions for measuring the consumption of water and thermal energy used for heating and cooling, for over 25 years.

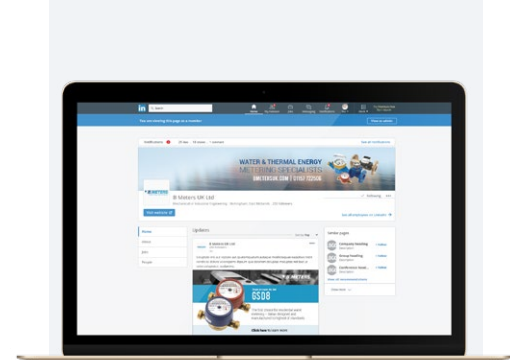
The yearly production currently exceeds 2M units, putting B METERS in a leading position both at national and European level.

The product range includes turbine (velocity) type single and multi-jet water meters with mechanical or magnetic transmission, Woltmann meters, irrigation meters, flow meters, thermal energy meters and heat cost allocators with direct reading, or complete with integrated modules for the remote transmission of the consumption data.



EN 1434

EN 834



**FOLLOW BMETERS ON LINKEDIN,
KEEP UP-TO-DATE WITH ALL
LATEST NEWS AND PRODUCT
INFORMATION**

THE BMETERS RANGE



WATER METERS



THERMAL ENERGY METERS



READING SYSTEMS



M-BUS SOLUTIONS