



**Woltmann type pre-equipped  
for inductive modules**

BMETERS' TAN-X5 is a tangential water meter, specifically developed for irrigation purposes. The dry dial and magnetic transmission make it suitable for the measurement of dirty water (solid sediments).

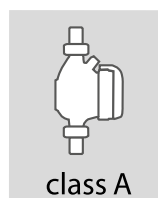
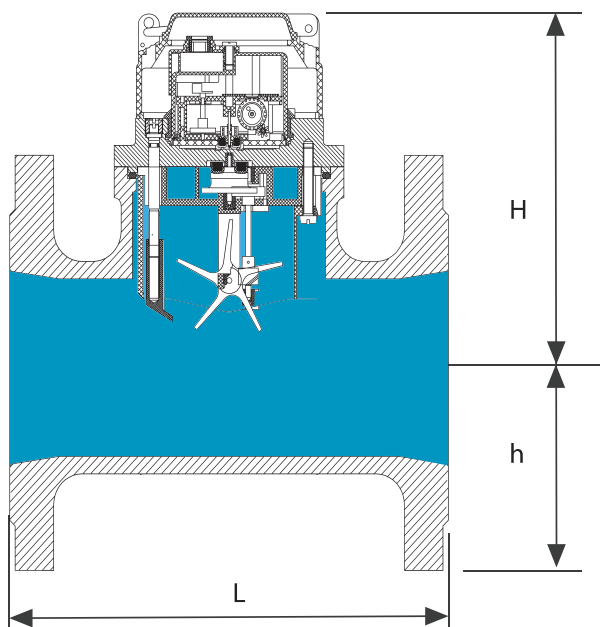
ISO 4064

Pre-equipped for pulse emitter device mounting, this meter is ISO 4064 approved.

## TECHNICAL FEATURES

Size	DN (in)	50 (1/2")	65 (1/2")	80 (3/4")	100 (1/2")	125 (1/2")	150 (3/4")	200 (3/4")
Overload flow rate Qmax	m³/h	70	100	150	250	350	500	900
Overload flow rate Qn	m³/h	35	50	75	125	175	250	450
Transitional flow rate Qt	m³/h	10.5	15	22.5	37.5	52.5	75	135
Minimum flow rate Qmin	m³/h	2.8	4	6	10	14	20	36
Maximum temperature	°C	50	50	50	50	50	50	50
Minimum reading	l	2	2	2	2	2	20	20
Maximum reading	m³	9,999,999						
Max admissible pressure MAP	bar	16						

## DIMENSIONS & WEIGHTS



Size	mm (in)	50 (2")	65 (2" 1/2)	80 (3")	100 (4")	125 (5")	150 (6")	200 (8")
L	mm	200	200	225	250	250	300	300
H	mm	150	150	150	150	150	152	195
h	mm	80.0	92.5	100.0	100.0	125.0	142.5	170.0
Weight	Kg	10.90	13.12	14.19	19.00	21.43	27.50	41.00



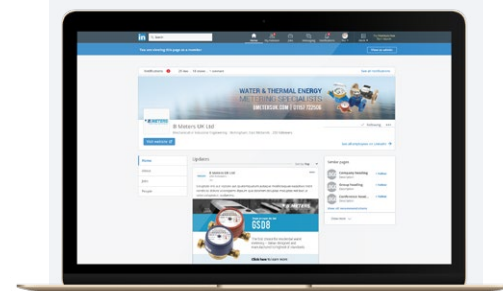


# DESIGNING, PRODUCING AND DISTRIBUTING SOLUTIONS FOR OVER 25 YEARS

B METERS is an Italian company that has been designing, producing and distributing instruments and solutions for measuring the consumption of water and thermal energy used for heating and cooling, for over 25 years.

The yearly production currently exceeds 2M units, putting B METERS in a leading position both at national and European level.

The product range includes turbine (velocity) type single and multi-jet water meters with mechanical or magnetic transmission, Woltmann meters, irrigation meters, flow meters, thermal energy meters and heat cost allocators with direct reading, or complete with integrated modules for the remote transmission of the consumption data.



**FOLLOW BMETERS ON LINKEDIN,  
KEEP UP-TO-DATE WITH ALL  
LATEST NEWS AND PRODUCT  
INFORMATION**



EN 1434

EN 834

## THE BMETERS RANGE



**WATER METERS**



**THERMAL ENERGY METERS**



**READING SYSTEMS**



**M-BUS SOLUTIONS**