



# HYDROSPLIT-M3

Thermal energy calculator split version

Separate heat/BTU calculator for measuring the amount of energy used for heating and/or cooling. Easily connectable to flow meters equipped with pulse output and used in systems with pipes larger than DN20 - 3/4".

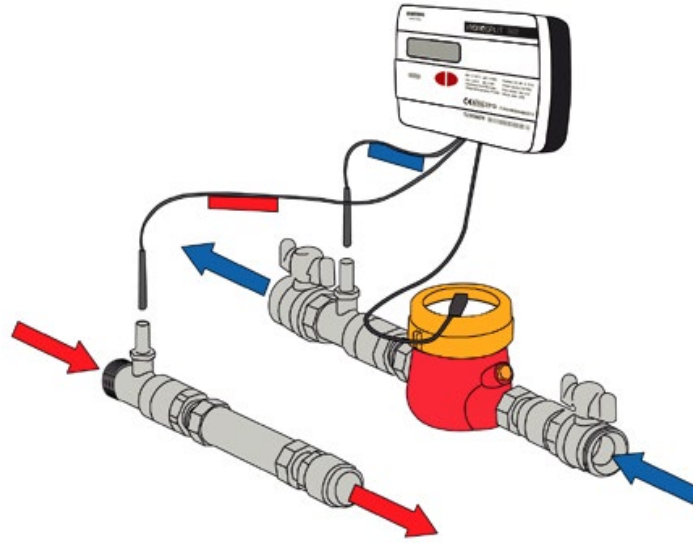
The processing of the data on the difference between the temperature of the thermo-vector fluid supply and the return one (DT), combined with the data on the volume of the thermo-vector fluid used, allows accurate calculation of the amount of energy consumed.

Approved according to the MID 2004/22/CE MI004 and the EN1434 standard.



## TECHNICAL FEATURES

Protection class	IP54
Accuracy class	2 – 3 (EN 1434)
Energy units	KWh / MWh or MJ / GJ
Interface type	7-digit LCD screen
Cable length	1.5 m
Storage temperature	-20 – 60°C
Temperature range	5 – 105°C
Ambient temperature	5 – 55°C
Temperature difference	3 K – 80 K
Power supply	Battery (11 years maximum lifetime)
Data Logger features	Storage for 24 monthly values including mid-month values



Standard version for installation on the return pipe.  
Version for installation on the flow pipe available upon request.



Getto Multiplo / Multi Jet  
Mod. CMC-R



Contatori ad ultrasuoni  
Ultrasonic flow meter  
Mod. HYDROSONIS-UP



Elettromagnetico  
Electromagnetic  
Mod. MAG



Woltmann  
Mod. WDC-R

# DESIGNING, PRODUCING AND DISTRIBUTING SOLUTIONS FOR OVER 25 YEARS

B METERS is an Italian company that has been designing, producing and distributing instruments and solutions for measuring the consumption of water and thermal energy used for heating and cooling, for over 25 years.

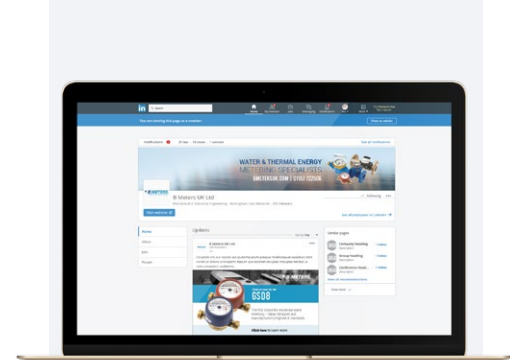
The yearly production currently exceeds 2M units, putting B METERS in a leading position both at national and European level.

The product range includes turbine (velocity) type single and multi-jet water meters with mechanical or magnetic transmission, Woltmann meters, irrigation meters, flow meters, thermal energy meters and heat cost allocators with direct reading, or complete with integrated modules for the remote transmission of the consumption data.



EN 1434

EN 834



**FOLLOW BMETERS ON LINKEDIN,  
KEEP UP-TO-DATE WITH ALL  
LATEST NEWS AND PRODUCT  
INFORMATION**

## THE BMETERS RANGE



**WATER METERS**



**THERMAL ENERGY METERS**



**READING SYSTEMS**



**M-BUS SOLUTIONS**