



GMB-I

Multi jet wet dial pre-equipped
for inductive modules

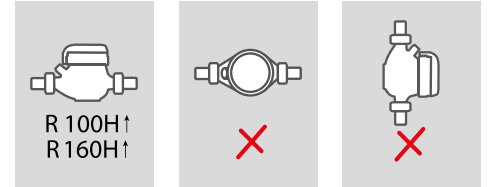
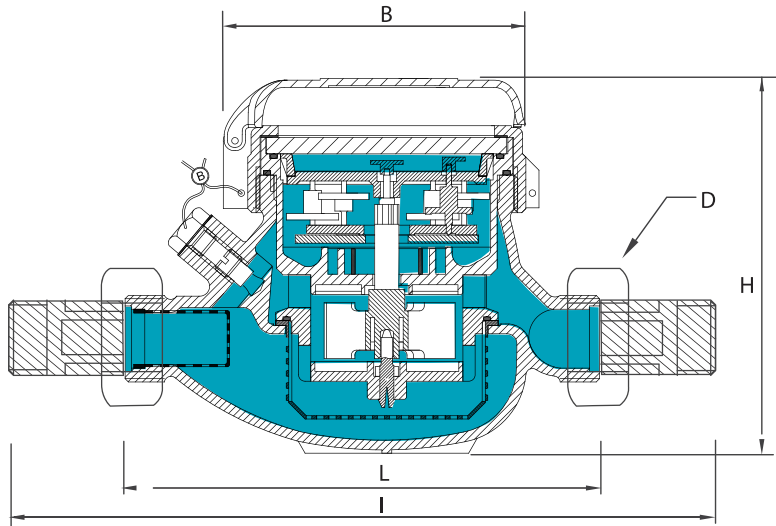
Multi-jet, wet dial, direct transmission water meter with inductive pre-equipment for the installation of data communication modules M-BUS wired and wireless OMS and non-magnetic pulse output and upon request LoRa & NB-IoT.



TECHNICAL FEATURES

	Size	DN	mm (in)	15 (1/2")	20 (3/4")	25 (1")	32 (1" 1/4)	40 (1" 1/2)	50 (2")
	Overload flow rate	Q ₄	m ³ /h	3.125	5	7.875	12.5	20	31.25
	Permanent flow rate	Q ₃	m ³ /h	2.5	4	6.3	10	16	25
R=100H ↑	Transitional flow rate	Q ₂	l/h	40	64	100.8	160	256	400
	Minimum flow rate	Q ₁	l/h	25	40	63	100	160	250
R=160H ↑	Transitional flow rate	Q ₂	l/h	25	40	63	100	160	250
	Minimum flow rate	Q ₁	l/h	15.63	25	39.38	62.5	100	156.25
	Sensitivity		l/h	6	6	10	10	20	20
	Minimum reading		l	0.05	0.05	0.05	0.05	0.05	0.05
	Maximum reading		m ³	99,999	99,999	99,999	99,999	999,999	999,999
	Max admissible pressure MAP		bar	16	16	16	16	16	16

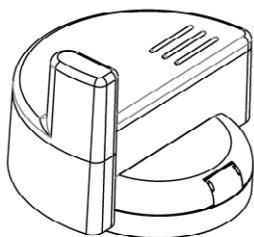
DIMENSIONS & WEIGHTS



Size	mm (in)	15 (1/2")	20 (3/4")	25 (1")	32 (1"1/4)	40 (1"1/2)	50 (2")
L	mm	145-165-190	190	260	260	300	300
I	mm	225-245-270	290	360	380	440	460
H	mm	109	111	117	117	153	172
B	mm	100	100	104	104	126	160
D*	in	3/4"	1"	1" 1/4	1" 1/2	2"	2" 1/2
Weight	Kg	1.18 1.41	1.4	2.09	2.18	4.38	4.46 9.40

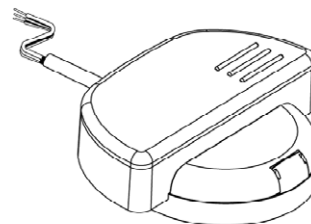
*Threading EN ISO 228-1:2003

COMPATIBLE MODULES



mod. IWM-LR3
LoRaWAN

mod. IWM-TX3
M-Bus



mod. IWM-MB3
M-Bus

mod. IWM-PL3
PULSE

DESIGNING, PRODUCING AND DISTRIBUTING SOLUTIONS FOR OVER 25 YEARS

B METERS is an Italian company that has been designing, producing and distributing instruments and solutions for measuring the consumption of water and thermal energy used for heating and cooling, for over 25 years.

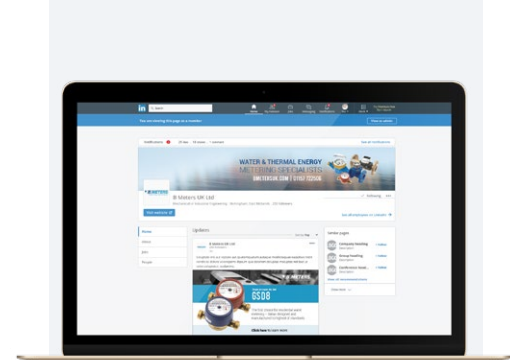
The yearly production currently exceeds 2M units, putting B METERS in a leading position both at national and European level.

The product range includes turbine (velocity) type single and multi-jet water meters with mechanical or magnetic transmission, Woltmann meters, irrigation meters, flow meters, thermal energy meters and heat cost allocators with direct reading, or complete with integrated modules for the remote transmission of the consumption data.



EN 1434

EN 834



**FOLLOW BMETERS ON LINKEDIN,
KEEP UP-TO-DATE WITH ALL
LATEST NEWS AND PRODUCT
INFORMATION**

THE BMETERS RANGE



WATER METERS



THERMAL ENERGY METERS



READING SYSTEMS



M-BUS SOLUTIONS