

CASE STUDY

WIRELESS METERING SOLUTION FOR NEW BUILD COMMERCIAL UNITS, COMPLETE WITH ENERGY CENTRE



B METERS UK worked alongside one of their longstanding distribution partners to provide a complete wireless metering solution for one of the UK's leading mechanical and electrical contractors in a new build, complete with an energy centre and several commercial units.

As the requirement entailed a complete metering solution – water, gas and thermal energy – B METERS water and thermal energy meters were installed alongside other manufacturer products to provide a complete solution, expertly collated via the use of B METERS integration and ELVACO products and software. The metering network was relatively close together <500m so despite some obstacles between the meters, the wireless solution proved very achievable and cost effective for the end client.

The B METERS GSD8-I, GMDM-I and WDE-K50 water meters, and Hydrosonis-UP thermal energy range were used with their respective wireless m-bus modules.

The B METERS pulse to wireless m-bus converter – RFM-TXE – was used with the Common wafer pattern turbine gas meters on the project to achieve a complete wireless m-bus system. All configured via the B METERS wireless m-bus USB receiver and B METER wireless m-bus software. The ELVACO CMi5110 was used to collate the wireless m-bus data and provide the data to the end client upon completion of the project.



GET IN TOUCH

If you would like to find out more about the B Meters wireless M-Bus range, please don't hesitate to contact our sales team on **01157 722506** or email at sales@bmetersuk.com

SOLUTIONS IN THIS PROJECT



20x GSD8-RFM

Digital single jet smart meter with Wireless M-BUS OMS integrated transmission module



20x RFM-TX1

The RFM-TX1 is a radio module suitable for the water consumption data radio transmission



8x GMDM-I

The GMDM-I is a multi-jet, semi-dry type magnetic transmission water meter with a 360° rotating lid



8x IWM-TX3

IWM-TX3 has been designed to allow wireless remote reading for many different types of applications



13x WDE-K50

The WDE-K50 is a horizontal Woltmann with a removable insert and sealed counter mechanism with a magnetic transmission

CASE STUDY

WIRELESS METERING SOLUTION FOR NEW BUILD COMMERCIAL UNITS, COMPLETE WITH ENERGY CENTRE

SOLUTIONS IN THIS PROJECT CONT.



13x IWM-TX4

IWM-TX4 has been designed to allow wireless remote reading in different types of applications



15x HYDROSONIS-UP

Flow sensor based on the ultrasonic measurement technology. The absence of internal moving parts ensures maximum measurement accuracy, no maintenance requirement and constant functionality over time



15x HYDROSPLIT-M3

HYDROSPLIT M3 is a separate (split) thermal energy calculator easily connectable to external flowmeters equipped with pulse output

GET IN TOUCH

If you would like to find out more about the B Meters wireless M-Bus range, please don't hesitate to contact our sales team on **01157 722506** or email at sales@bmetersuk.com



6x COMMON CPT-01

CPT Quantometers have been designed in order to provide our customers with reliable and inexpensive measuring instruments for secondary flows



3x RFM-TXE PULSE TO WIRELESS M-BUS CONVERTER

The RFM-TXE module transmits via radio the lecture data of 1 or 2 meters equipped with pulse output device



1x RFM-RPT3

The signal repeater Wireless M-Bus-RFM RPT3, is a device that allows to repeat, extending its coverage, the radio signal transmitted by the radio modules installed on water meters, heat meters and heat cost allocators, in accordance with the WMBUS standard



1x ELVACO CMI5110 WIRELESS M-BUS RECEIVER

CMI5110 is a wireless M-Bus Receiver, integrated in a CMI-Box, which can be used by any existing wired M-Bus solution or together with Elvaco CMe Series products

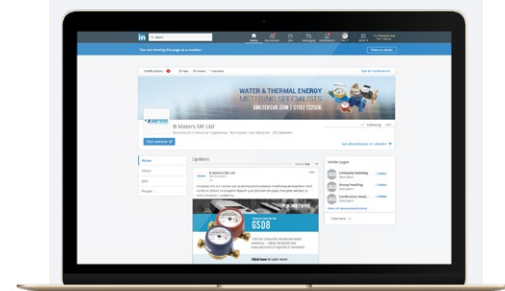


DESIGNING, PRODUCING AND DISTRIBUTING SOLUTIONS FOR OVER 25 YEARS

B METERS is an Italian company that has been designing, producing and distributing instruments and solutions for measuring the consumption of water and thermal energy used for heating and cooling, for over 25 years.

The yearly production currently exceeds 1,800,000 units, putting B METERS in a leading position both at national and European level.

The product range includes turbine (velocity) type single and multi-jet water meters with mechanical or magnetic transmission, Woltmann meters, irrigation meters, flow meters, thermal energy meters and heat cost allocators with direct reading, or complete with integrated modules for the remote transmission of the consumption data.



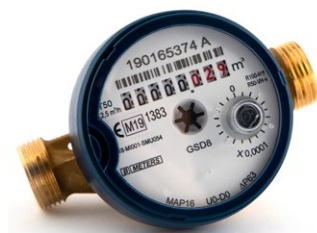
**FOLLOW BMETERS ON LINKEDIN,
KEEP UP-TO-DATE WITH ALL
LATEST NEWS AND PRODUCT
INFORMATION**



EN 1434

EN 834

THE BMETERS RANGE



WATER METERS



THERMAL ENERGY METERS



READING SYSTEMS



M-BUS SOLUTIONS