



# WDE-K50

Woltmann type pre-equipped for inductive modules

The WDE-K50 is a horizontal Woltmann with a removable insert and sealed counter mechanism with a magnetic transmission.

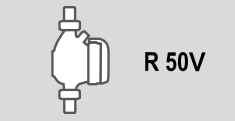
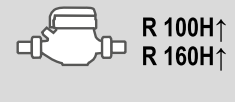
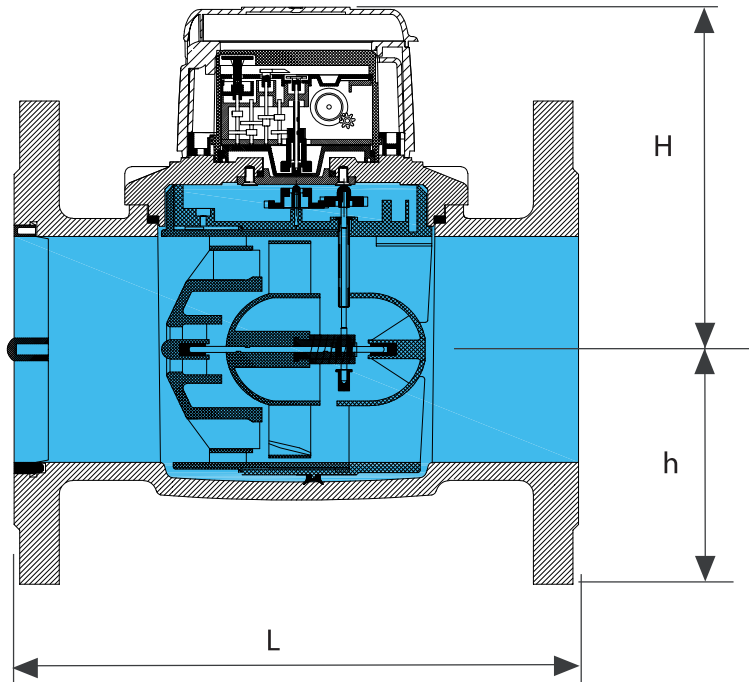
Inductive pre-equipment for the installation of M-Bus Wired and Wireless OMS data communication modules, non-magnetic pulse output and, upon request, LoRa & NB-IoT.



## TECHNICAL FEATURES

	Size	DN	mm (in)	15 (1/2")	15 (1/2")	20 (3/4")	15 (1/2")	15 (1/2")	20 (3/4")	20 (3/4")
	<b>Overload flow rate</b>	Q <sub>4</sub>	m <sup>3</sup> /h	50	78.75	125	200	200	312.5	500
	<b>Permanent flow rate</b>	Q <sub>3</sub>	m <sup>3</sup> /h	40	63	100	160	160	250	400
R=100H ↑	<b>Transitional flow rate</b>	Q <sub>2</sub>	m <sup>3</sup> /h	0.64	1.008	1.6	2.56	2.56	4.0	6.4
	<b>Min flow rate</b>	Q <sub>1</sub>	m <sup>3</sup> /h	0.40	0.63	1.00	1.60	1.60	2.5	4.0
R=160H ↑	<b>Transitional flow rate</b>	Q <sub>2</sub>	m <sup>3</sup> /h	0.256	0.403	0.64	1.024	1.024	1.60	2.56
	<b>Min flow rate</b>	Q <sub>1</sub>	m <sup>3</sup> /h	0.16	0.252	0.40	0.64	0.64	1.00	1.60
	<b>Min reading</b>		l			0.5			5	
	<b>Max reading</b>		m <sup>3</sup>			999,999			9,999,999	
	<b>Max pressure loss at Q3</b>		bar	0.25	0.40	0.25	0.40	0.40	0.16	0.40
	<b>Max admissible pressure MAP</b>		bar				16			

## DIMENSIONS & WEIGHTS



Size	mm (in)	50 (2")	65 (2" 1/2)	80 (3")	100 (4")	125 (5")	150 (6")	200 (8")
L	mm	200	200	225	250	250	300	350
H	mm	130	130	152	152	152	181	181
h	mm	78	86	95	104	117	133	162
Weight	Kg	8.5	9.5	13.5	15	18	30.5	43





# DESIGNING, PRODUCING AND DISTRIBUTING SOLUTIONS FOR OVER 25 YEARS

B METERS is an Italian company that has been designing, producing and distributing instruments and solutions for measuring the consumption of water and thermal energy used for heating and cooling, for over 25 years.

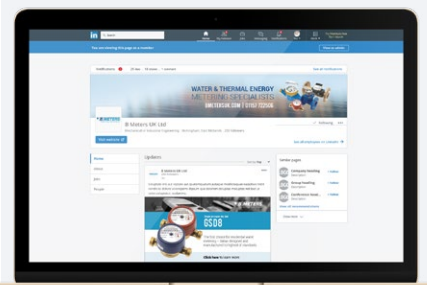
The yearly production currently exceeds 1,800,000 units, putting B METERS in a leading position both at national and European level.

The product range includes turbine (velocity) type single and multi-jet water meters with mechanical or magnetic transmission, Woltmann meters, irrigation meters, flow meters, thermal energy meters and heat cost allocators with direct reading, or complete with integrated modules for the remote transmission of the consumption data.



EN 1434

EN 834



**FOLLOW BMETERS ON LINKEDIN,  
KEEP UP-TO-DATE WITH ALL  
LATEST NEWS AND PRODUCT  
INFORMATION**

## THE BMETERS RANGE



**WATER METERS**



**THERMAL ENERGY METERS**



**READING SYSTEMS**



**M-BUS SOLUTIONS**