

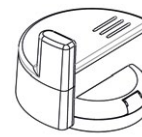


# GMDM-I

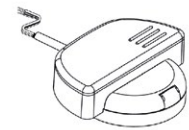
Multi jet super-dry pre-equipped for remote reading modules

The GMDM-I is a multi-jet, dry dial magnetic transmission water meter with a 360° rotating lid.

Inductive pre-equipment for the installation of data communication modules come standard; M-Bus Wired and Wireless OMS, and non-magnetic pulse output. LoRa and NB-IoT are available upon request.



M-Bus  
mod. IWM-TX3

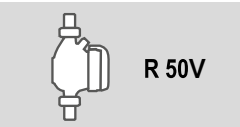
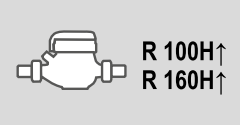
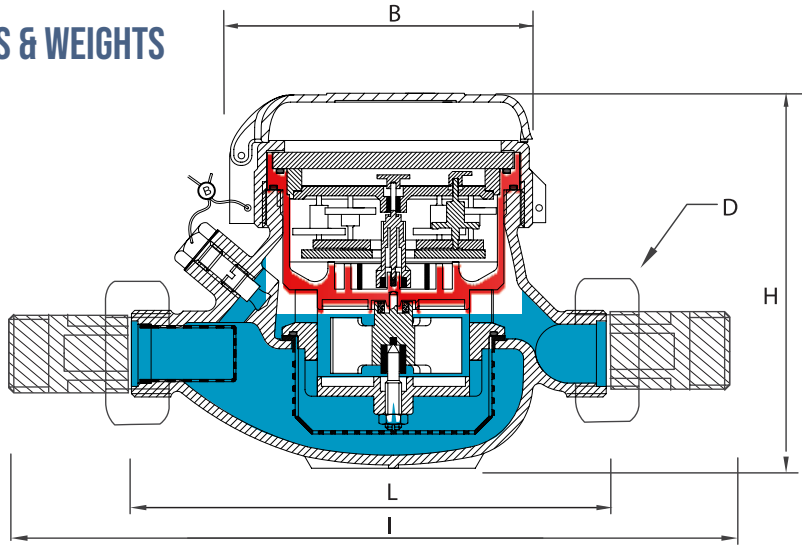


M-Bus PULSE  
mod. IWM-MB3 mod. IWM-PL3

## TECHNICAL FEATURES

	Size	DN	mm (in)	15 (1/2")	15 (1/2")	20 (3/4")	20 (3/4")	20 (3/4")	20 (3/4")
R=100H↑	Overload flow rate	Q <sub>4</sub>	m <sup>3</sup> /h	3.125	6	7.875	12.5	20	31.25
	Permanent flow rate	Q <sub>3</sub>	m <sup>3</sup> /h	2.5	4	6.3	10	16	25
	Transitional flow rate	Q <sub>2</sub>	l/h	40	64	100.8	160	256	400
	Min flow rate	Q <sub>1</sub>	l/h	25	40	63	100	160	250
R=160H↑*	Transitional flow rate	Q <sub>2</sub>	l/h	25	40	63	100	160	250
	Min flow rate	Q <sub>1</sub>	l/h	15.63	25	39.38	62.5	100	156.25
	Sensitivity		l/h	6	6	10	10	20	20
	Min reading		l	0.05	0.05	0.05	0.05	0.05	0.05
	Max reading		m <sup>3</sup>			99,999			
	Max admissible pressure MAP		bar	16	16	16	16	16	16

## DIMENSIONS & WEIGHTS



Size	mm (in)	15 (1/2")	20 (3/4")	25 (1")	32 (1 1/4")	40 (1 1/2")	50 (2")
L	mm	145-165-190	190	260	260	300	300
I	mm	225-245-270	290	360	380	440	460
H	mm	109	111	117	117	153	172
B	mm	100	100	104	104	126	160
D*	in	3/4"	1"	1 1/4"	1 1/2"	2"	2 1/2"
Weight	Kg	1.18 1.41	1.4	2.09	2.18	4.38	4.46 9.40



# DESIGNING, PRODUCING AND DISTRIBUTING SOLUTIONS FOR OVER 25 YEARS

B METERS is an Italian company that has been designing, producing and distributing instruments and solutions for measuring the consumption of water and thermal energy used for heating and cooling, for over 25 years.

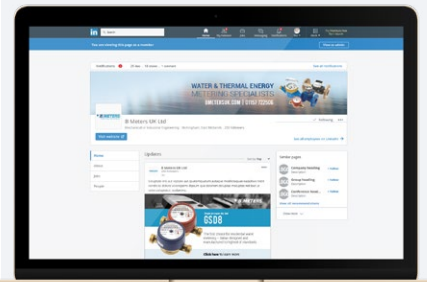
The yearly production currently exceeds 1,800,000 units, putting B METERS in a leading position both at national and European level.

The product range includes turbine (velocity) type single and multi-jet water meters with mechanical or magnetic transmission, Woltmann meters, irrigation meters, flow meters, thermal energy meters and heat cost allocators with direct reading, or complete with integrated modules for the remote transmission of the consumption data.



EN 1434

EN 834



**FOLLOW BMETERS ON LINKEDIN,  
KEEP UP-TO-DATE WITH ALL  
LATEST NEWS AND PRODUCT  
INFORMATION**

## THE BMETERS RANGE



**WATER METERS**



**THERMAL ENERGY METERS**



**READING SYSTEMS**



**M-BUS SOLUTIONS**